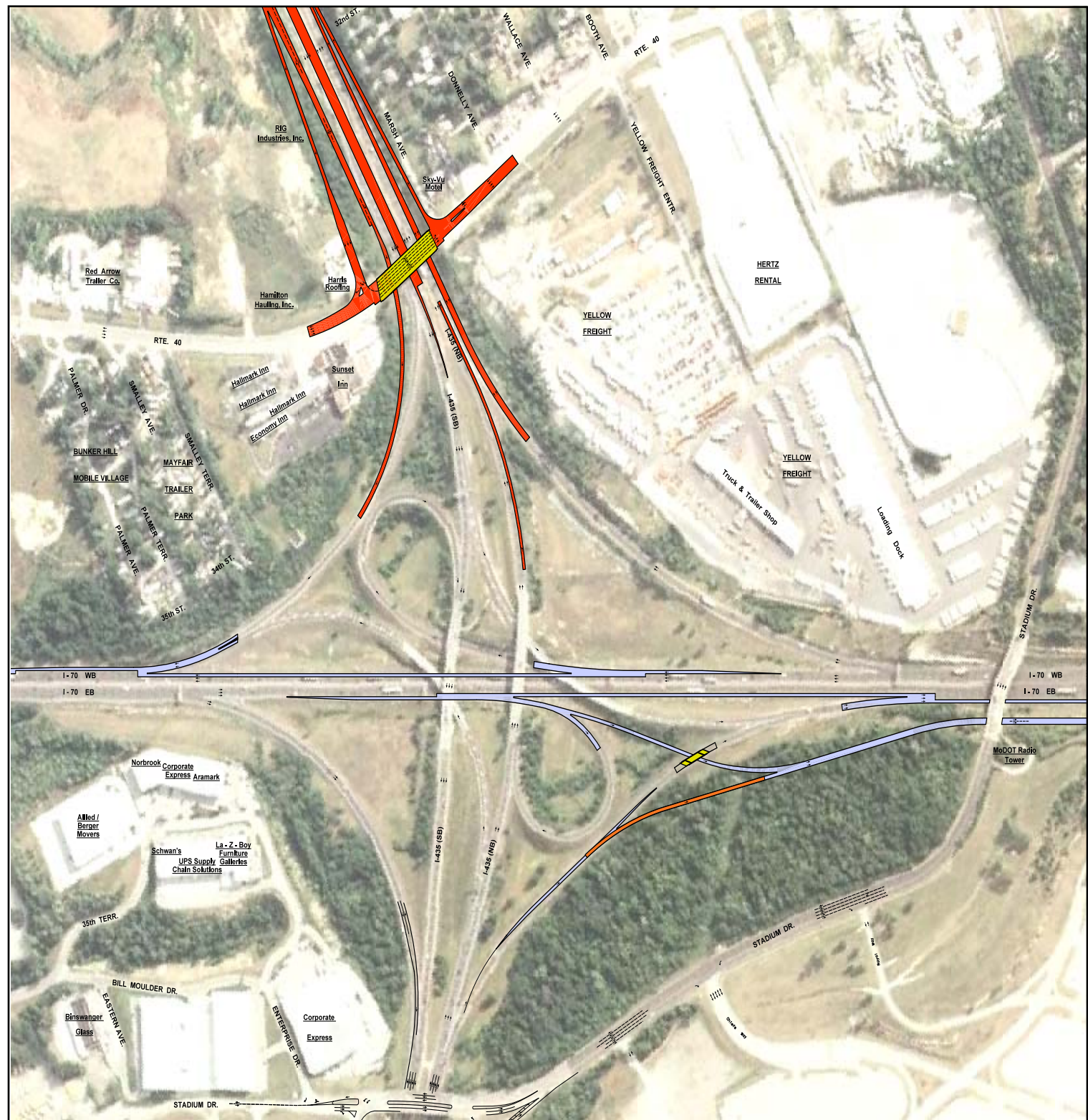


New Access From I-435

Reaching the stadiums from the north, south and west

New access at I-435 and Route 40 will augment the removal of Manchester Trafficway access at I-70. Long ramps will handle event-day traffic to and from the Truman Sports Complex and provide several points

of access to the stadiums. Improved access at Route 40 will better use that federal highway. Resurfacing of Route 40 will be done in conjunction with interchange improvements.



I-435 & I-70

How will we improve this interchange?

The busy I-435 & I-70 interchange is a bottleneck that must be improved. MoDOT has a plan to start this process, with pieces of the puzzle that can be solved now.



MoDOT is working on plans to reduce bottlenecks and improve both capacity and access through projects partially funded by the American Recovery and Reinvestment Act and also through MoDOT's Statewide Transportation Improvement Program.

Preliminary design and public involvement in the spring of 2009 will set the stage for construction to begin in early 2010. MoDOT will:

- Add a half-diamond interchange at I-435 and Route 40
- Replace the Blue Ridge Cutoff (George Brett) Bridge over I-70 with a wider, broader span that will include a wider sidewalk and reconfigured ramps
- Reconfigure the ramps at I-70 and Route 40
- Reconfigure the ramp from northbound I-435 to eastbound I-70 with a direct connection to the Blue Ridge Cutoff
- Remove the ramps at Manchester Trafficway and I-70

Each of these changes is necessary so that MoDOT can add a third through-lane on both eastbound and westbound I-70 beneath I-435, which will significantly improve traffic movement on I-70 and on I-435.

These improvements are expected to be completed by the end of 2012.

For further information on this project, contact Rick Orr at 622-0460. For more information about other projects in the area, please visit MoDOT's Web site at www.modot.mo.gov/kansascity.



I-435 & I-70 Interchange project news from the Missouri Department of Transportation

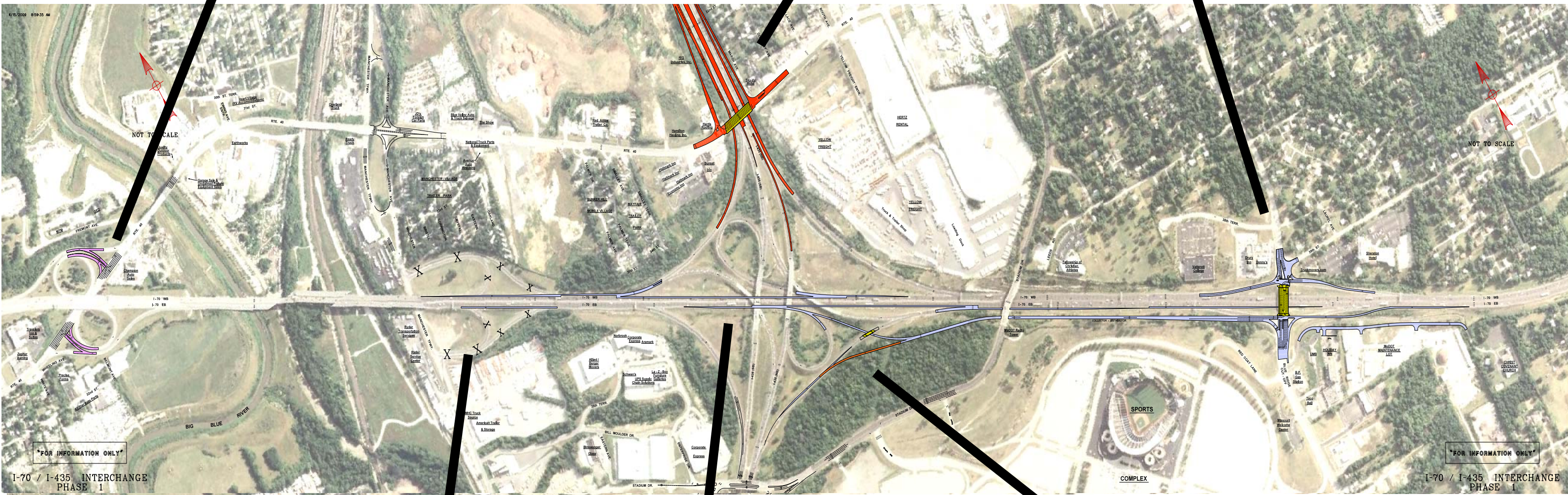
April 2009

What will be changed, and why

Reconfigure the ramps at I-70 and Route 40. **Must be altered to provide access in all directions from I-70 to Route 40.**

Add a half-diamond interchange at I-435 and Route 40. **Improves access to Route 40 and Manchester Trafficway from the north. Compliments Stadium Drive half diamond south of I-70.**

Replace the Blue Ridge Cutoff (George Brett) Bridge over I-70 with a wider, broader span that will include a wider sidewalk and reconfigured ramps. **Longer bridge necessary to accommodate more I-70 lanes and collector/distributor ramp. Must be completed by Royals home opener in early April 2010.**



Remove the ramps at Manchester Trafficway and I-70. **Must be eliminated to safely accommodate third lane each direction of I-70. Ramps at I-435 too close to Manchester ramps.**

Add a third lane in each direction on I-70 beneath I-435 interchange. **Three lanes of I-70 on each side of I-435 currently narrow to two lanes plus exit ramps, which creates traffic backups.**

Reconfigure the ramp from northbound I-435 to eastbound I-70 with a direct connection to the Blue Ridge Cutoff. **Eliminates mainline merge congestion for Blue Ridge Cutoff bound vehicles. Also separates event traffic from mainline I-70.**