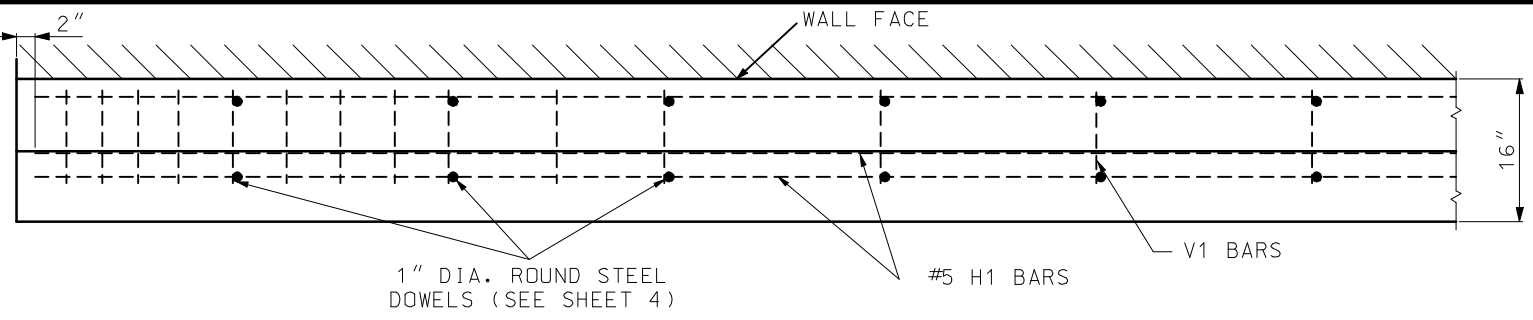
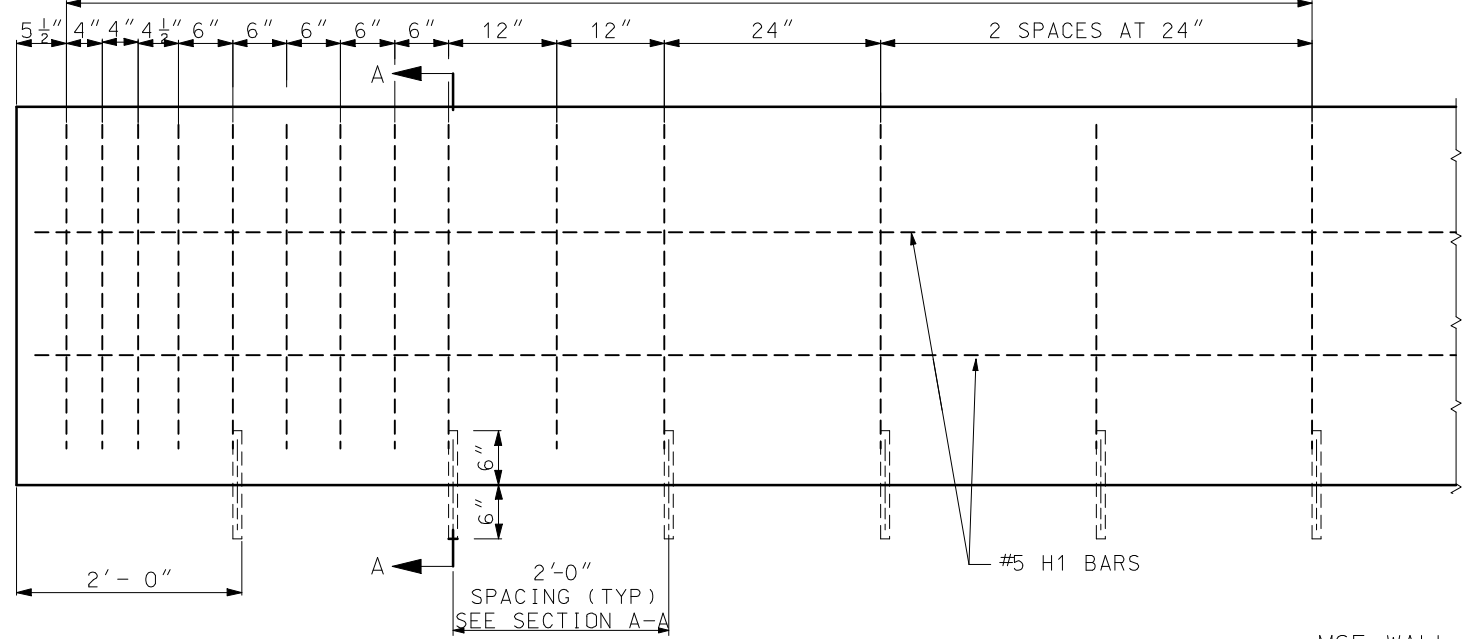


ROUTE	STATE	DISTRICT	SHEET NO.
	MO		
JOB NO.			
CONTRACT ID.			
PROJECT NO.			
COUNTY			DATE

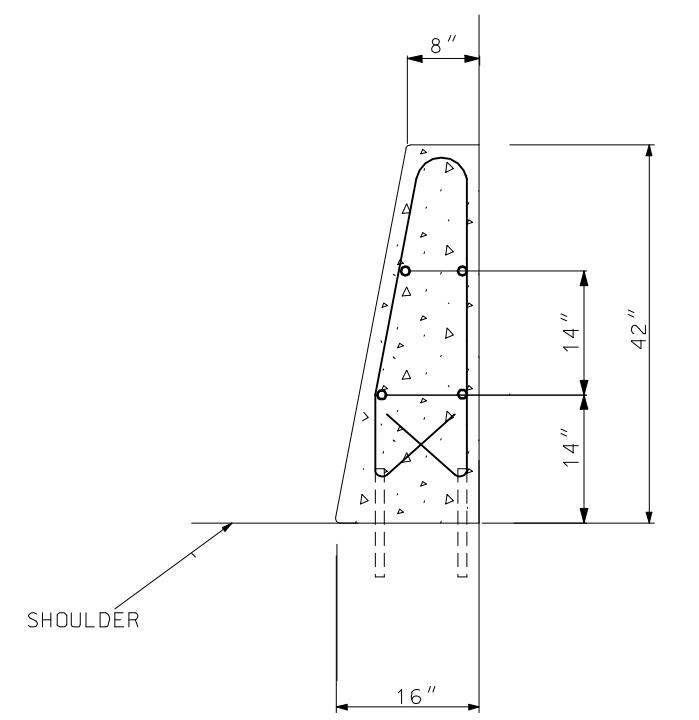


PLAN VIEW

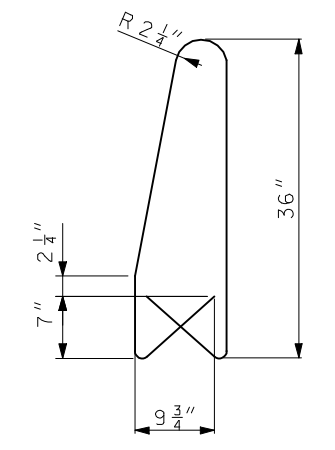
LIMITS OF #4 - V1 SPACED AS SHOWN BELOW AT TERMINAL ENDS OF BARRIER ONLY



ELEVATION REINFORCING DETAILS



TYPE D TYPICAL SECTION

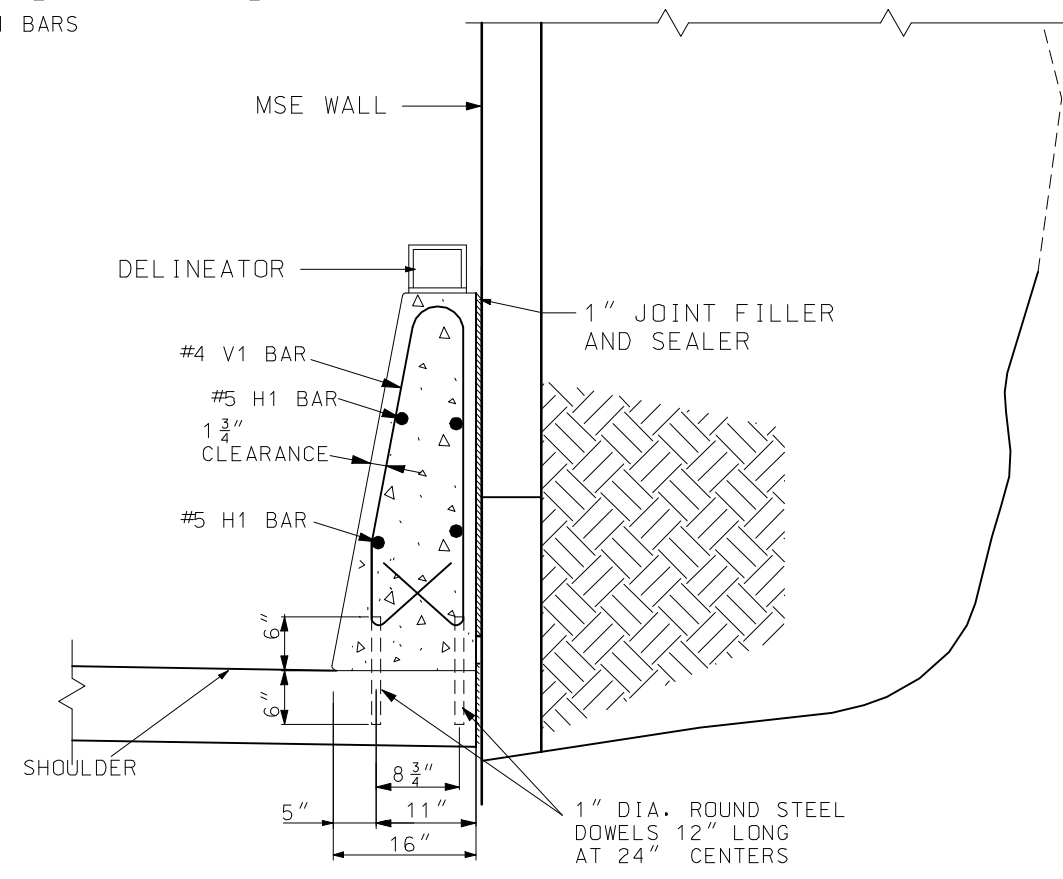


V1 BAR (#4)

MINIMUM CLEARANCE TO REINFORCING STEEL SHALL BE 1 1/2", UNLESS OTHERWISE SHOWN.

NOTES:

- BAR SPLICES SHALL BE A MINIMUM OF 24 TIMES THE NOMINAL DIAMETER OF THE BAR.
- ANY METHOD DEvised BY THE CONTRACTOR AND APPROVED BY THE ENGINEER THAT WILL ASSURE THE LONGITUDINAL REINFORCING STEEL WILL BE POSITIONED ± 1/2 INCH AS DIMENSIONED WILL BE SATISFACTORY.
- THE CONTRACTOR HAS THE OPTION TO SLIP-FORM THE BARRIER. IN WHICH CASE, ADDITIONAL REINFORCEMENT MAY BE TIED TO THE UPPER TWO-THIRDS OF THE REINFORCING CAGE TO PROVIDE BRACING.
- THIS BARRIER SHALL NOT BE USED TO SUPPORT HIGHWAY LIGHTING POLES.
- THIS BARRIER SHALL NOT BE USED FOR BRIDGE ROADWAY APPLICATIONS.
- SAWED JOINTS SHALL BE SPACED AT 15'-0". SEE STANDARD PLANS FOR SAWED JOINT DETAIL
- TYPE D BARRIER SHALL BE USED ONLY AT LOCATIONS SHOWN ON PLANS.
- FOR DELINEATOR DETAILS, SEE STANDARD PLANS.



SECTION A-A

MISSOURI HIGHWAYS AND TRANSPORTATION COMMISSION			
TYPE D TRAFFIC BARRIER AT THE SIDE OF MSE WALL			
DATE: _____	EFFECTIVE: 09-20-2006	SPECIAL SHEET	1/1